

CTC&G

Connecticut Cottages and Gardens

COTTAGES-GARDENS.COM | SEPTEMBER 2013

AS
SEEN
IN
CTC&G

ARTFUL LIVING

GRAFFITI GAINS GROUND | VENICE BIENNALE | GRACIOUS INTERIORS

BALANCING ACT

ARCHITECTURE
AND INTERIORS
WORK HAND
IN HAND IN THIS
SOPHISTICATED
BLEND OF CITY
AND COUNTRY

BY ALEXA STEVENSON

PHOTOGRAPHY BY
JEFF McNAMARA

Gracious Circle In the living room, a Roman Thomas sofa is covered in Holland & Sherry fabric. The clients' own slipper chairs, reupholstered in a zebra stripe, face a Chesney's fireplace and custom cocktail table. Small ivory tusk table is through Baker Furniture. See Resources.



Welcome Home (TOP) An antique alabaster pendant from Urban Archaeology hangs in the classically appointed entry, which has a Christian Liaigre parchment console. The landscape (ABOVE) was designed by James Doyle of Doyle Herman Design Associates. Richard Koch of Davenport Contracting built the home. **Top of the Morning** A Holly Hunt fixture hangs above a Circa Antiques table in the breakfast area (OPPOSITE), which is just off the kitchen. See *Resources*.

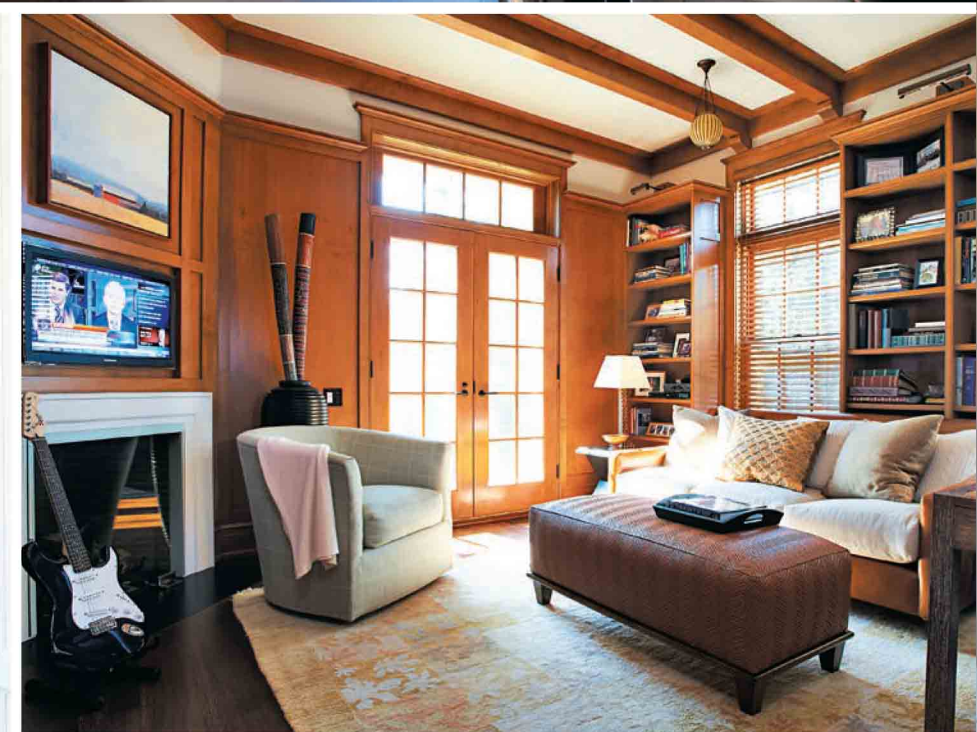
IT'S NOT AN UNCOMMON SEQUENCE

of events: City couple marries, and, later, decides to have children, realizing a bigger family means the urban life they love may not work. Like it or not, the couple gives up a metropolitan address for the suburbs. Certainly, it can be a dilemma for those who aren't quite ready to give up on sophisticated city life. So what's a couple to do? For these New Yorkers who decamped to Old Greenwich to start a family, the solution was to simply have it all without leaving the comfort of their own house.

The house in question was a turn-of-the-century center-hall Colonial revival that they enlisted Southport-based architect McKee (Mac) Patterson, of Austin Patterson Disston Architects, to transform into their dream home. However, after due consideration, Patterson decided that adapting the current property would not fit the program, and he started afresh. The house is essentially two building masses, joined in the middle by a circular shape that almost acts as a hinged joint connecting the two structures and separating the two parts of the house. On one side of this joint, which houses the kitchen, are the more formal rooms, while the other side hosts the more relaxed spaces. It's zoned for family life and adult life, elegant and formal, but relaxed and approachable at the same time.

Inside, where it's classically appointed with every detail perfected and endless white moldings, one might expect traditional Greenwich furnishings and finishes. But the interior belies the classical architecture with its warm and modern feel, thanks to Michael Cox and Mary Foley, the duo behind New York-based design firm Foley & Cox.





Round and Round The oval shaped kitchen (top) serves as the hub of the house, separating the more formal area from the more relaxed. Countertops are Carrara marble. **Study Hall** The cozy and masculine library (above) features the clients' own sofa that was redone in leather and linen. **The Little Things** Patterson's attention to detail is evident in the butler's pantry (left) off the kitchen, where the countertops are made of zinc. **Subtle Shimmer** In the dining room (opposite), the walls are covered in very fine grasscloth on a metallic backing for a quiet sheen. Chairs from Williams-Sonoma Home complement a Hudson Furniture table. Glass chandelier from Wired Custom Lighting. See Resources.





Dual Sided
Patterson designed the shower in the master bathroom to separate his from hers, each side has shower access.



"We got involved at the point when our primary focus was interior furnishings and the final layer of finish," says Cox. The clients had a clear vision of how they wanted it to function, and Foley and Cox were able to give the graciously sized house dual functions, essentially city and country life in one structure. A formal living room is well suited for adult entertaining with a custom parchment cocktail table, Milo Baughman barrel chairs and slipper chairs upholstered in a zebra stripe. The more contemporary pieces play off the traditional architectural details, drawing an interesting contrast instead of everything melding together. Off the grand entry, a dining room is rich in luxurious textures and materials with references to the Deco period. "She [the client] didn't want it to feel like she was in the suburbs. She wanted to be able to have a beautiful sit-down, served dinner in the dining room and a cocktail party in the living room," says Cox. "She wanted to maintain a little bit of that urban sensibility while creating a comfy nest for the family."

Meanwhile, on the other side of the house, situated behind the oval-shaped kitchen, is a family room with a comfortable L-shaped sectional covered in a kid-friendly Holland & Sherry ultrasuede. Textures and subtle colors, like a coffee table covered in sheets of mica with an exposed walnut edge, chunky wood lamps and a strie hemp and jute rug, give this room a neutral ground that is as practical and forgiving as it is striking. The quiet, contemporary palette is a study in balance: country and city, traditional and modern, masculine and feminine. There is a formality to it, but it is certainly not stiff, evident in the mink velvet lacquered powder room tucked behind a staircase. It's sophisticated but unpretentious, and, perhaps most importantly, the interior coheres perfectly with the architecture, creating an inviting space that is used from stern to stern. "Every time I go over there," notes Patterson, "I say, 'It works better each time I'm here.' And that's exactly what you want to happen." 🌟

Dreamy Oasis The master bedroom (ABOVE) gives off a zen vibe with a layer of creamy colors and soothing textures. Frette pillows top the bed. Slipper chairs are covered in a Rogers & Goffigon fabric. **Stay Happy** Custom window cushions sit below a window—that opens in the middle—in an attic-level guest room (BELOW). See Resources.

