

# design **aspire** home

**CELEBRATING  
15 YEARS  
OF SUBLIME  
DESIGN**

**JOYFUL** COLOR,  
DISTINCTIVE SHAPES  
AND THE WILD  
IMAGINATION  
OF ITALIAN DESIGN

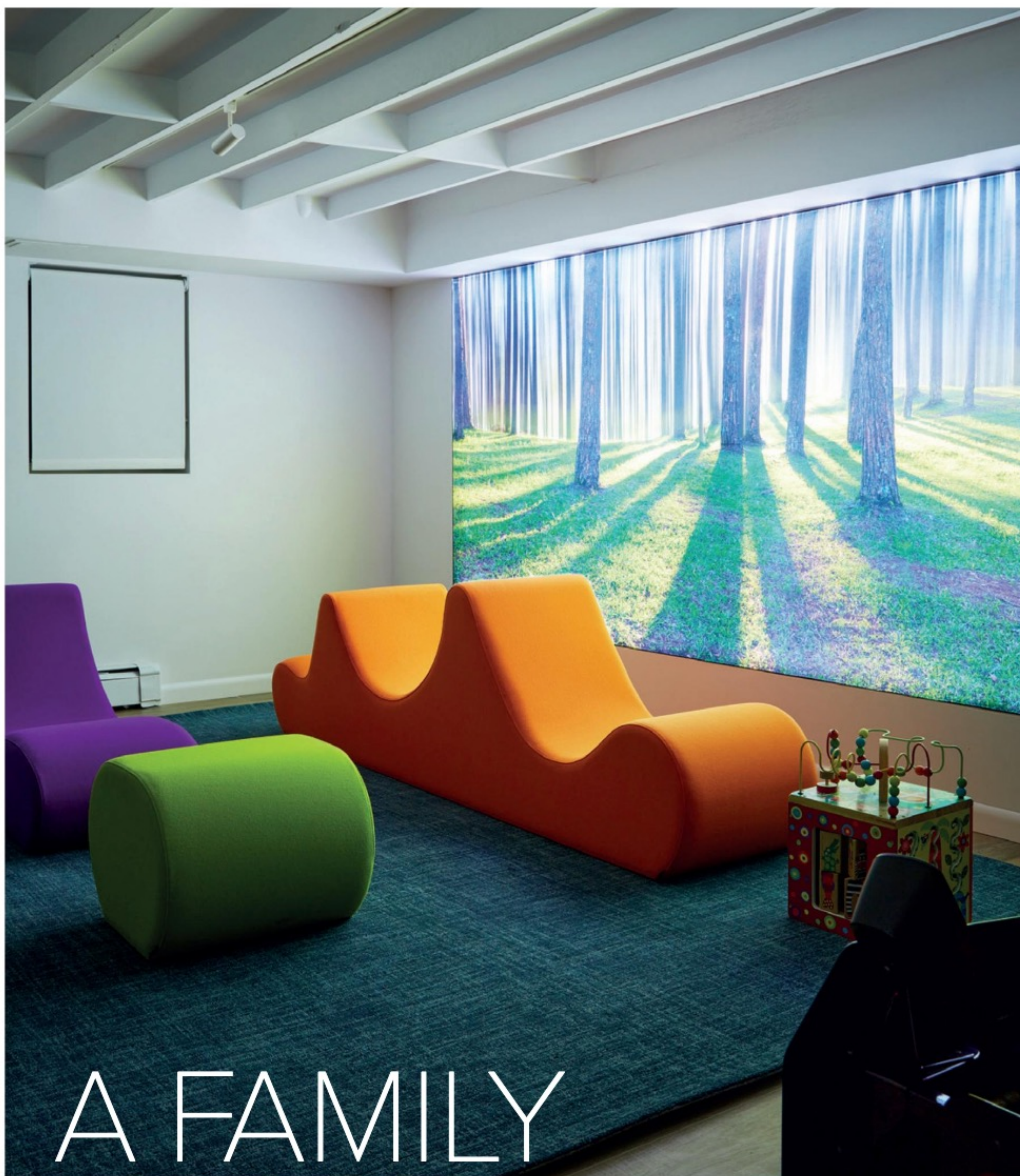
FEASTING ON  
OUR ANNUAL  
**BLACK+**  
**WHITE**  
DESIGN  
ISSUE



**seeking the sublime**

WINTER 2023  
ASPIREDESIGNANDHOME.COM  
DISPLAY UNTIL 3/21/23





# A FAMILY AFFAIR

With spaces to satisfy multiple generations, foley&cox designed a sophisticated and inviting home for all to enjoy

TEXT JENNIFER QUAIL PHOTOGRAPHY TIM LENZ



In a Long Island home that represents more than a decade of collaboration between the homeowners and design firm foley&cox, a third generation now has a space to call its very own. Over time, and as the clients' family expanded, the designers have been invited back to redesign and refresh a variety of spaces, the most recent of which included the creation of a multigenerational family hub, where special attention was devoted to engaging and playful space for the grandkids.

The lower level of the 5,000-square-foot home experienced a complete renovation, which Michael Cox, principal of foley&cox, notes was created specifically with the third family generation in mind. "We joked with them and said, 'We are going to make you the coolest grandparents in the whole neighborhood,'" the designer recalls. And the bright, cheerful space surely has done just that.

Cox explains that, in their goal to morph the windowless, lower-level space into an inviting retreat the whole family could enjoy, the design team got involved in the interior architecture and found creative ways to connect with the outdoors. A closed-off staircase was redesigned to open it up and render it, and the entire lower level, more welcoming. Colorful, durable furnishings, flooring, and other elements raise the playful quotient, while a large and welcoming sectional provides space for the whole family to enjoy time together. A low, drop ceiling was ripped out and the height of the room taken all the way up to the structural cross beams. And "daylight" shines on the space via a Duratrans from Skyframe that depicts the great outdoors. "You have a sense there's a big window there," Cox says of the large-scale light box. "It's our way of bringing some vibrancy and life into the space."



A Kyle Bunting Mr Crowley hide rug graces the front entry which is flanked by the living and dining areas. The Gaia Pendant Triple Tier Chandelier from OCHRE hangs above an Ostinato II Table by Cristian Branea surrounded by Holly Hunt Hampton Dining Chairs covered in Parrot-colored Caledonian Leather, a pop of citrine green picked up from the triptych beyond.



A custom U-shaped sectional covered in Perennials' Rough 'n Rowdy fabric invites all to gather, while the assortment of geometric Blu Dot ottomans in hues like Tomato, Lilac, and Grasshopper, as well as the brightly patterned throw pillows from West Elm, remind all this is a space for play and imagination.

That energy and effective use of color continues throughout the home, where sophisticated pops of powerful and saturated hues coexist with furnishings from an array of historic and more recent periods, as well as art that takes a decidedly modern turn. "It's this really nice blend and mix of periods and styles that show you can live in a modern way with classic, vintage, or antique elements," Cox says of the assortment.

As the firm has long been involved in the evolution of the home, the designers also have had the opportunity to both help the homeowners build an art collection and to move the artwork among the home's rooms over time, allowing it to prompt changes in color schemes in particular spaces and new appreciation for the pieces themselves. "When you shift something," Cox explains, "you get the opportunity to see it in a different context and with fresh eyes." That can be said of multiple pieces that found new homes during the recent work in the house. A Lloyd Martin triptych whose pieces previously hung flush to one another in the living room, for example, was given new perspective when moved to the dining room, where it is now displayed with space that emphasizes the division of its individual pieces and where its pop of citrine green served as a springboard for the green leather selected for the dining chairs.

It's that sense of discovery and rediscovery that defines this home that has been collected over time on the collaborative journey of the designers and the homeowners. "There's a beautiful sense of what's collected," Cox notes. "You travel to a different part of the world and get introduced to a completely different culture and style. And then you incorporate a component of that into your home environment and play with ways to make it part of your world."

Understanding the world of this client has been enhanced through time and shared experience. Through the years, foley&cox also designed homes in The Hamptons and Florida for the couple and has just completed work on the home of one of their children. "When I say 'collaboration,' it truly is," Cox remarks. "We've known each other so long and there's really a trust and confidence level. They're excited and engaged and really give us the freedom to tap into our best creativity. We all evolve over time, and we're doing that together."











An exercise in shape and form, the breakfast room offers space to reflect on artwork by Johnnie Winona Ross that previously was experienced only in passing as one moved through a hallway. The soft, linear lines of the piece are met with circular Stamp Triple flushmount lighting by The Urban Electric Co., Maharam's Assembled Check by Paul Smith fabric on the chair backs, and wood flooring by The Hudson Company in a dramatic sunburst pattern.

“When you shift something, you get the opportunity to see it in a different context and with fresh eyes.”

—Michael Cox





**Above:** A Luke Lamp Co., 4ft Tracer Bar 1.1 hanging light shares center stage with a large central island surrounded by Artistic Frame counter stools. Christopher Peacock cabinetry and hardware, as well as dramatic Arabescato Corchia Marble envelope the space. **Below:** The designers created special moments in smaller form throughout the home. On the left, an Orientalist chest of drawers is contrasted with a sculptural table lamp from foley&cox HOME and contemporary art placed asymmetrically. An intentional mix of styles, the powder room, right, gains a stunning glow from Maya Romanoff's Mother of Pearl on the Half Shell wallcovering. Crystal Sphere Pendants, handmade by Alison Berger Glassworks for Holly Hunt, and Ivory Onyx surfaces add modern drama to the space, while the classic David Hicks floor provides angular contrast.





“We wanted there to be pops of color  
in very sophisticated tones.”

—Michael Cox



In the living area, an existing three-seat sofa was reupholstered in Claremont Furnishing's Mohair Velvet in Bottle Green to complement the autumnal hues of other pieces in the room, like the artwork *Year of the Dog #11* by Judy Pfaff that hangs above.